

DR.ALEXA KELLY

ASSISTANT
PROFESSOR OF
ANATOMY

CUSOM

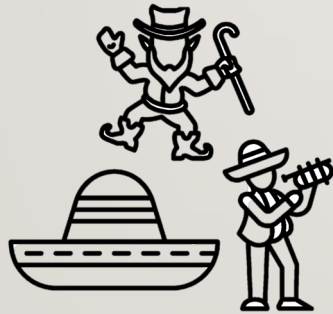
FROM ANTHROPOLOGY TO ANATOMY

WHAT IS ANTHROPOLOGY?

- The study of humanity.



Linguistic



Cultural



Biological



Archaeology



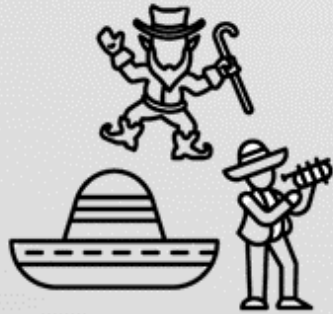
Paleontology

WHAT IS ANTHROPOLOGY?

- The study of humanity.



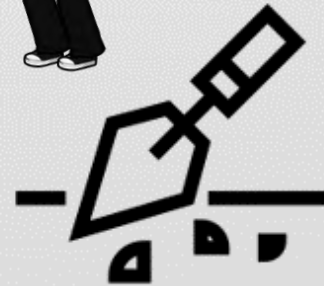
Linguistic



Cultural



Biological



Archaeology



B.S. in Anthropology from Florida State University

Analysis of Humeral Trochlear Angles as Possible Biological Sex Characteristic

Alexa M. Pennavaria
Florida State University

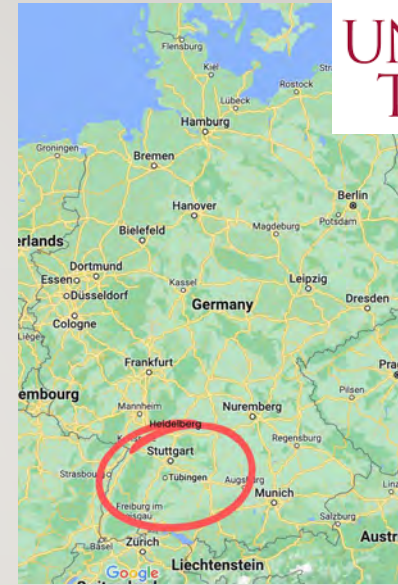
Keywords: comparative anatomy, biological sex, carrying angle, bone morphology, functional anatomy



Male



Female



EBERHARD KARLS
UNIVERSITÄT
TÜBINGEN



B.S. in Anthropology from Florida State University

Smithsonian National Museum of Natural History

What does it mean to be human?

FAQ Support Our Work

Search

Human Evolution Research Human Evolution Evidence Human Characteristics Education Exhibit About Us Multimedia

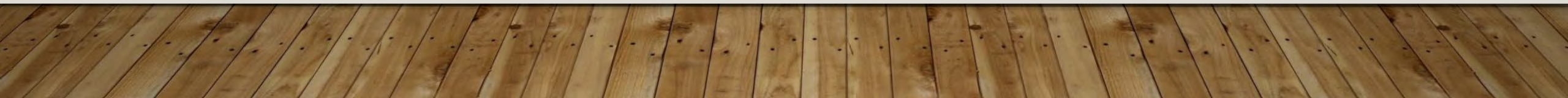

Home » Human Evolution Evidence » Human Fossils » Fossils » La Ferrassie

La Ferrassie

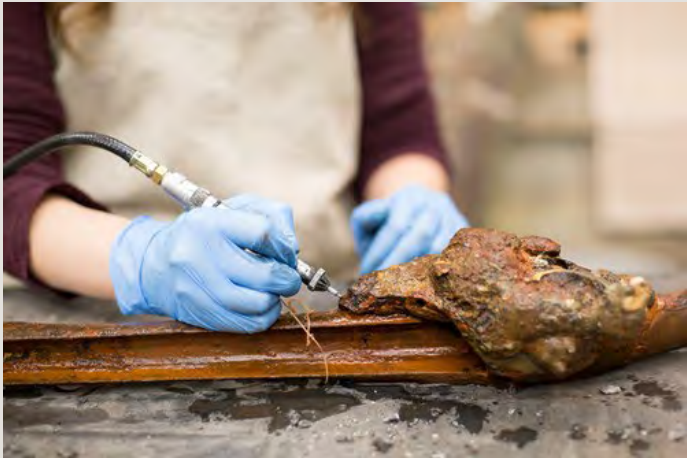
- Behavior
- Human Fossils
 - Species
 - Fossils
 - Mystery Skull Interactive
 - Shanidar 3 - Neanderthal Skeleton

★ Exhibit Item
Site: La Ferrassie Cave, France
Year of Discovery: 1909
Discovered by: Louis Capitan and Denis Peyrony
Age: Between 70,000 and 50,000 years old
Species: *Homo neanderthalensis*

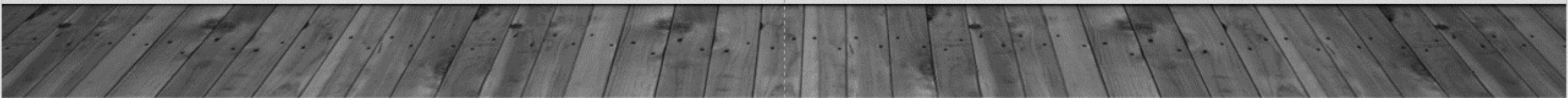
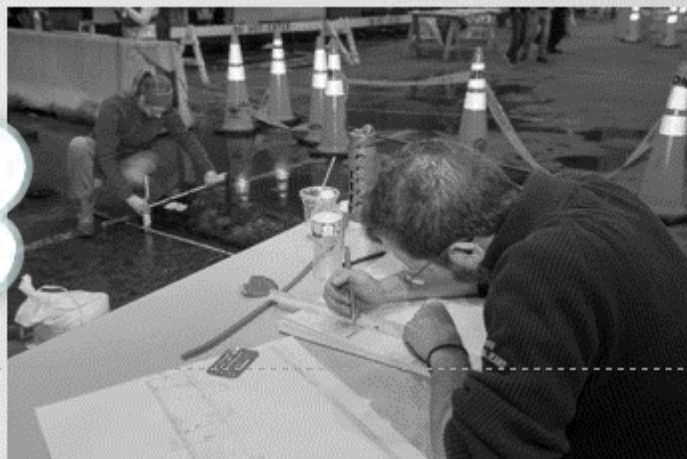
3D Scans



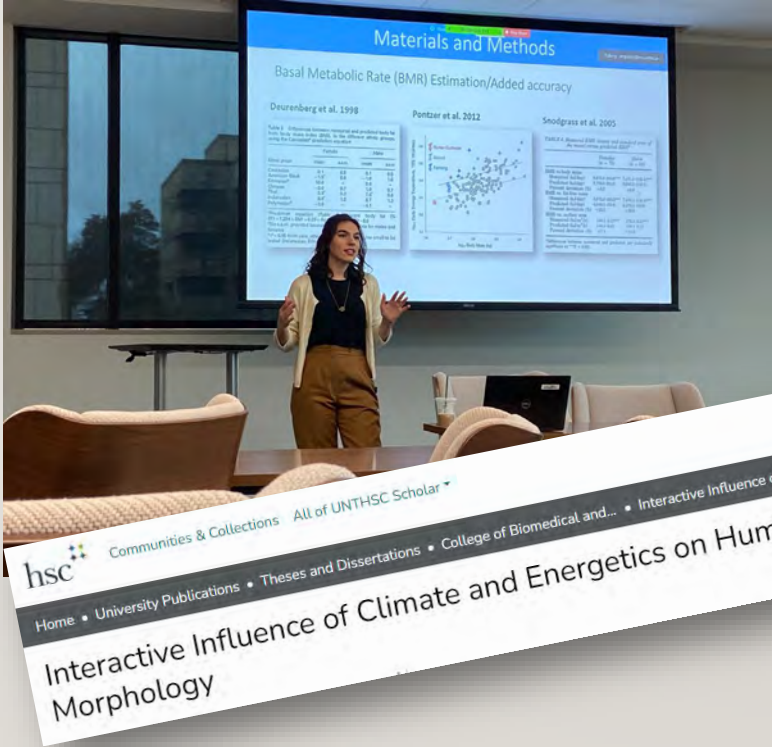
Archeological Conservator Bureau of Archeological Research, Florida Department of State



Archeological Conservator Bureau of Archeological Research, Florida Department of State



Ph.D. in Biomedical Science from the University of North Texas HSC



Materials and Methods
Basal Metabolic Rate (BMR) Estimation/Added accuracy

Deurenberg et al. 1999

Parameter	Mean	SD	95% CI
Age	23.2	3.2	16.8-30.6
Sex	0.51	0.50	0.01-1.01
Height	1.75	0.07	1.61-1.89
Weight	68.7	12.1	44.5-92.9
BMI	22.7	3.2	16.3-29.1
Body fat (%)	15.1	3.4	8.3-21.9
Lean body mass (kg)	58.2	10.1	38.1-78.3
BMR (kcal/day)	1715	215	1285-2145

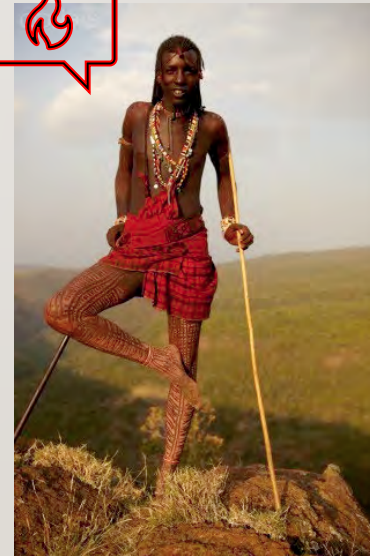
Pontzer et al. 2012

Snoogras et al. 2005

hsc Communities & Collections All of UNTHSC Scholar
Home • University Publications • Theses and Dissertations • College of Biomedical and... • Interactive Influence of Cli...
Interactive Influence of Climate and Energetics on Human Nasal Morphology

RESEARCH

- Investigate how the human respiratory system has evolved over time
- Especially considering:
 - Environment (temperature, humidity, altitude)
 - Body size
 - Changes to the skull





Australia



Africa



Europe



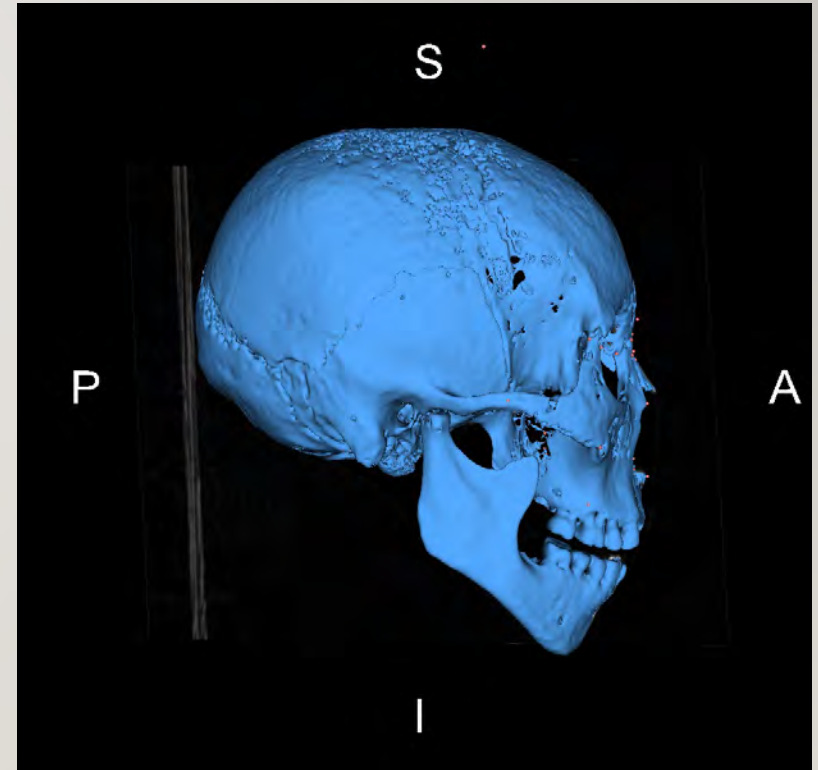
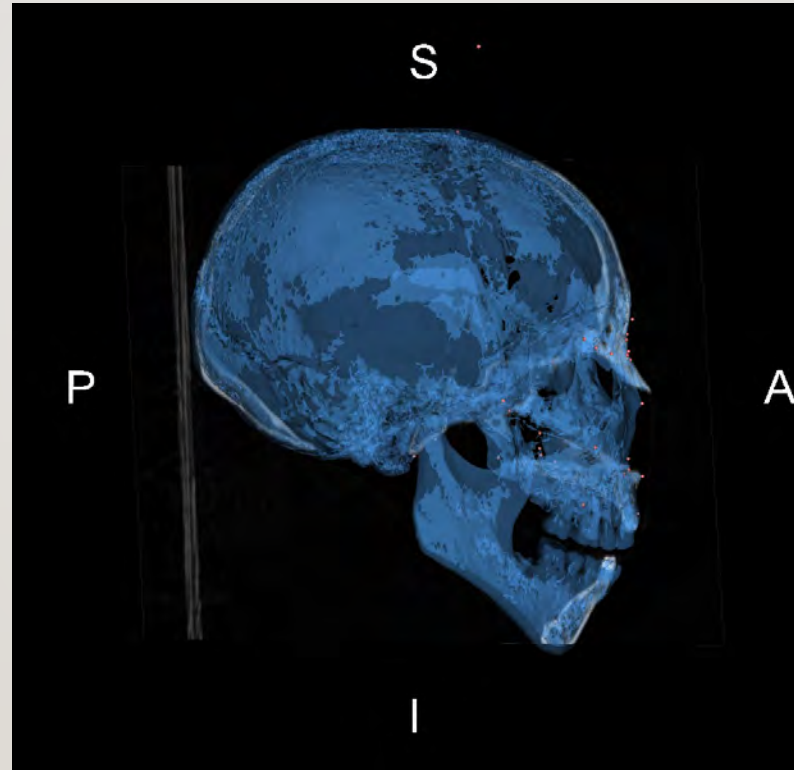
Asia



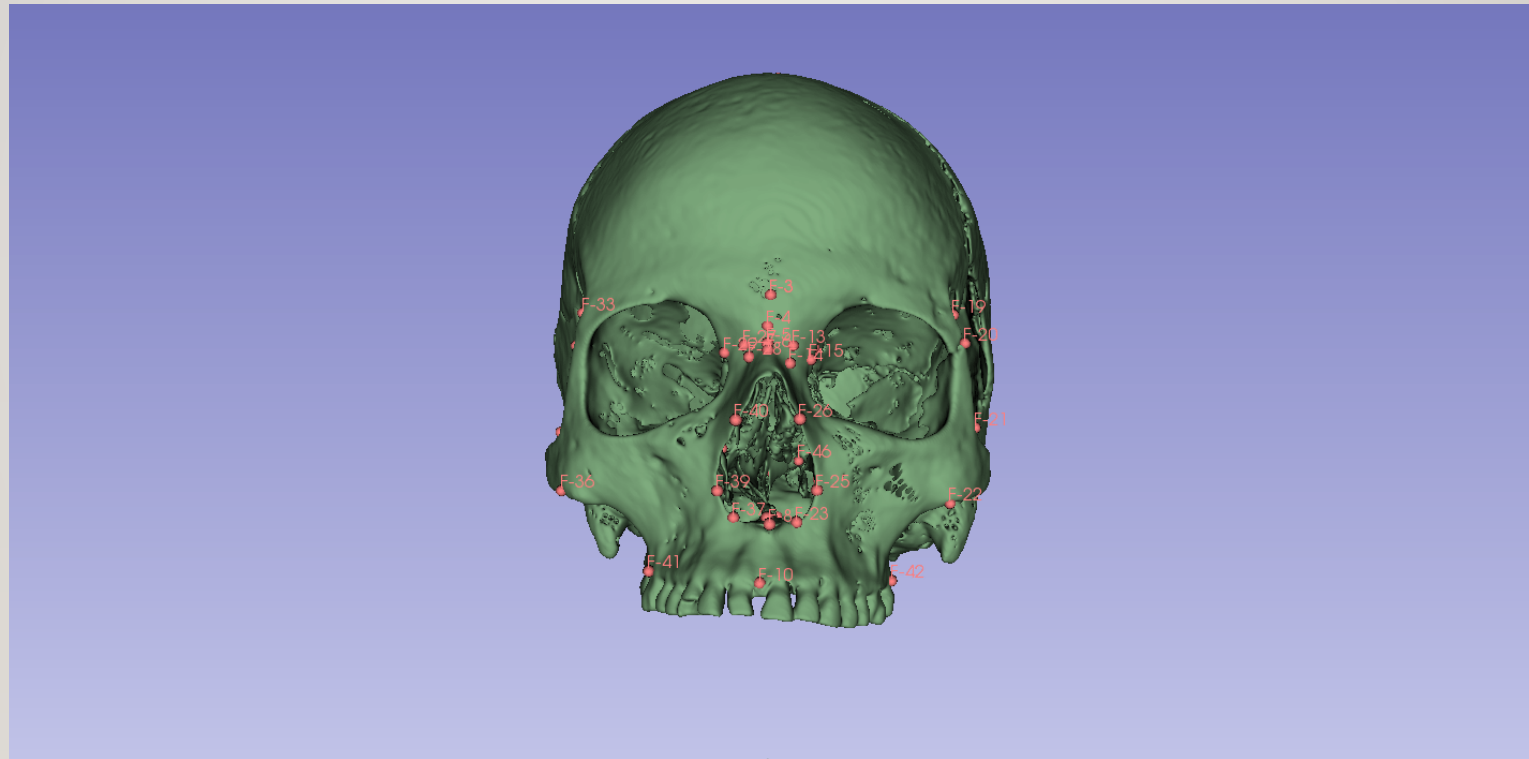
Arctic



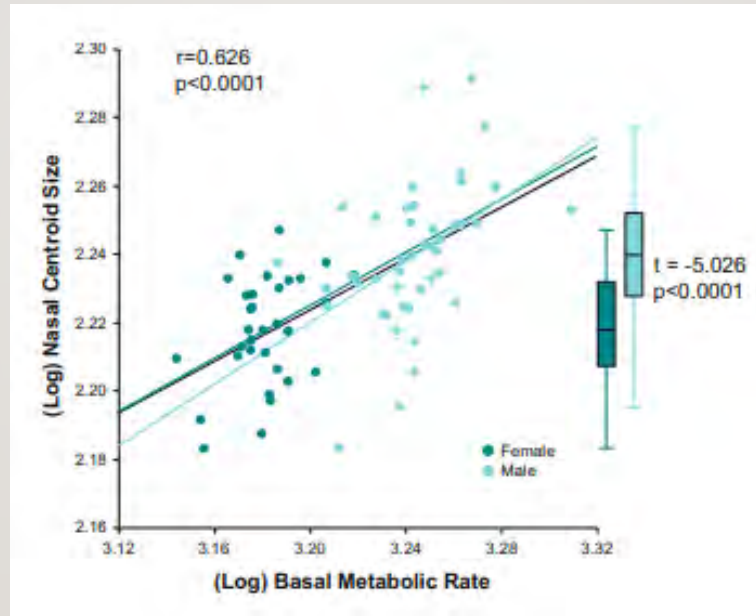
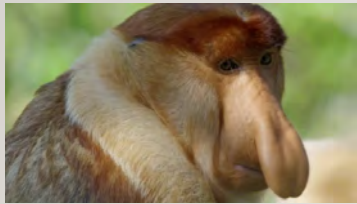
RESEARCH



RESEARCH



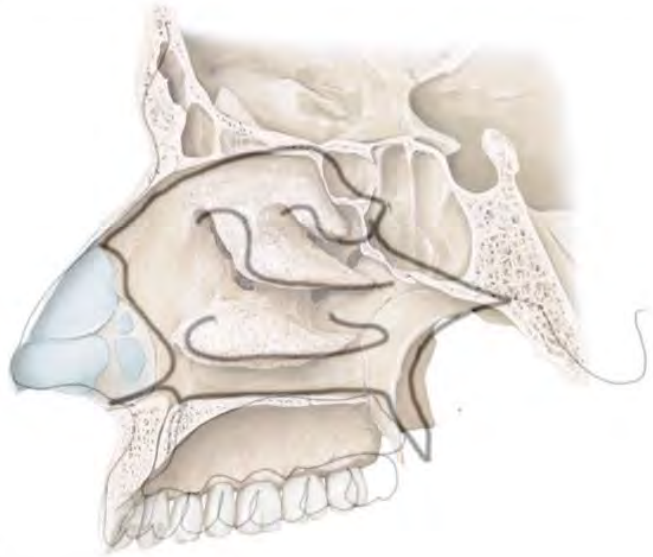
RESEARCH



RESEARCH



Arctic



Europe & Southwest Asia



Hong Kong University, China



Seoul National University, Korea



University of Cambridge, England



Penn Museum, Philadelphia

Fieldwork

2025?

Natural History Museum
Vienna, Austria



Uni Coimbra
Coimbra, Portugal



Musée de l'Homme
Paris, France



Uni Florence
Florence, Italy



Uni Tubingen
Tubingen, Germany



Uni Bordeaux
Bordeaux, France





THANK YOU!

akelly@campbell.edu



CAMPBELL
UNIVERSITY

Jerry M. Wallace
School of Osteopathic Medicine